



JOHNS HOPKINS  
UNIVERSITY

---

Institute for Planetary Health

# January Planetary Health Dinner

Safeguarding health on a rapidly changing planet

# Post-Election Conversations: Maintaining Progress

---

## Insights & Impacts: Post-Election Debrief

**Past Event: Recording Available**

On November 7<sup>th</sup> JHU faculty and experts from both sides of the political divide met to analyze the election outcome of the 2024 US general election.





# JHIPH Strategic Plan

---

The Johns Hopkins Institute for Planetary Health Strategic Plan is now available for viewing.

This document provides additional insights into the institute's programs and highlights opportunities where your work might align.

If you have any questions, please reach out to JHIPH at [\*\*JHIPH@jhu.edu\*\*](mailto:JHIPH@jhu.edu).

**Scan Me!**



# Strengthening Education: First-Year Seminars | Consider Teaching One!

**The First-Year Seminars (FYS)** program introduces first-year students to the university's intellectual life, fostering habits of mind to tackle global challenges.

Faculty beyond KSAS are welcome to teach a seminar, and we invite you or any faculty members you know to consider offering a course connected to Planetary Health. **Apply by January 24<sup>th</sup>**

## Course Structure:

- Fall semester
- In-person
- 150 minutes a week – One 2.5 hr class or Two 75-minute class
- Capped at 12 students
- 3 Credits
- Satisfactory/Unsatisfactory

Contact [@stacy.villegas@jhu.edu](mailto:@stacy.villegas@jhu.edu) to brainstorm how Planetary Health can intersect with your topic of interest



JOHNS HOPKINS  
UNIVERSITY

Institute for Planetary Health

# Strengthening Research: Bloomberg Distinguished Prof's: Planetary Health

This cluster's investment in research includes:

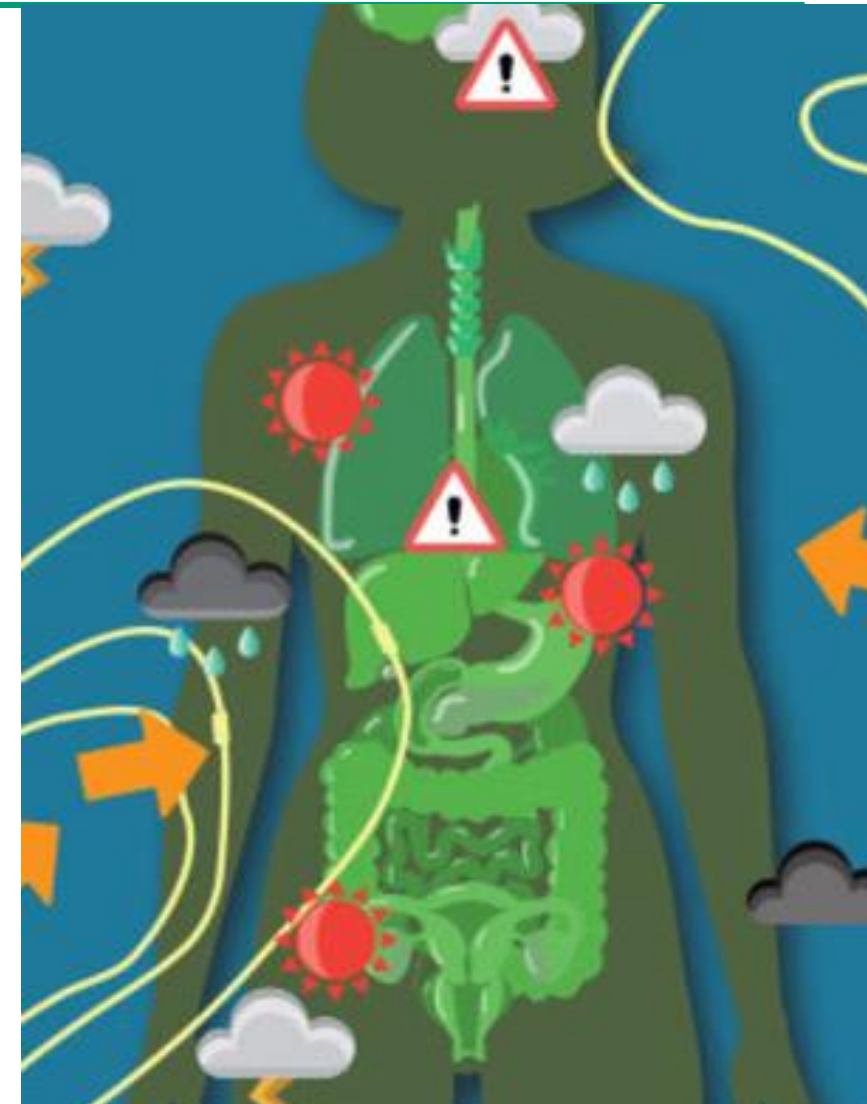
**4 Bloomberg Distinguished Professorships**

**4 Junior Faculty Positions**

These faculty, along with the **cluster leads**, will collaborate along with existing Johns Hopkins faculty on this important area of research.

Reach out with suggestions or want to learn more

More info: <https://bdp.jhu.edu/bdp-clusters/planetary-health/>



# Strengthening Research & Community: Nexus Awards | Planetary Health

## 2025 Planetary Health Track *Convening and Research Opportunities*

The Nexus Awards are a university wide initiative launched in 2023 to support convening, research, and teaching anchored at the Johns Hopkins University Bloomberg Center.

Awarded projects and programs span the breadth of the faculty's scholarship and expertise: Artificial intelligence and health policy, the arts and humanities, planetary health and gender equity, and much more.

**Submissions due February 14, 2025**



JOHNS HOPKINS  
UNIVERSITY

Institute for Planetary Health

# Strengthening Community: Sustainability Symposium

Climate & Sustainability

## 6<sup>th</sup> Annual Sustainability Symposium

Wednesday, April 2, 2025

JHU students, faculty, and staff are invited to submit proposals for the 6<sup>th</sup> Annual Sustainability Leadership Council Symposium, which will be held on Wednesday, April 2, 2025.

Submissions can include individual presentations, full sessions, research posters, or informational tables focused on sustainability research, practice, or education at JHU.

All sustainability-related topics and ideas are welcome and encouraged!

**Submissions are due by January 24, 2025.**



JOHNS HOPKINS  
UNIVERSITY

Institute for Planetary Health

# Strengthening Community: Planetary Health Dinner Series

---

## Upcoming Events

**February 6<sup>th</sup>:** Shriver Hall, Clipper Room

**March 6<sup>th</sup>:** Welch Medical Library, West Reading Room

**April 3<sup>rd</sup>:** Scott Bates Commons, Salon C

**May 7<sup>th</sup>:** National Aquarium

Keep an eye out for an email from Paperless Post for your invitation. We hope to see you there!



JOHNS HOPKINS  
UNIVERSITY

Institute for Planetary Health



# Let's Stay Connected!

---



We'd love to hear about the connections you made during the dinner!

Did you find any new opportunities to collaborate with the Institute or among fellow guests?

Please share any insights, ideas, or feedback that emerged!

# Planetary Health & Policy



**Keshia Pollack Porter**  
Bloomberg Centennial Chair  
Professor  
Health Policy & Management



**Amanda Daflos**  
Executive Director  
Bloomberg Center for  
Public Innovation



**Sonia Angell**  
Distinguished Professor of Practice  
Epidemiology  
Environmental Health  
and Engineering



**Shere Abbott**  
Teaching Professor  
Environmental Health  
and Engineering



**Francisca Rojas**  
Academic Practice Director  
Bloomberg Center for  
Public Innovation

# Thank You!

[planetaryhealth.jhu.edu](https://planetaryhealth.jhu.edu)



JOHNS HOPKINS  
UNIVERSITY

Institute for Planetary Health